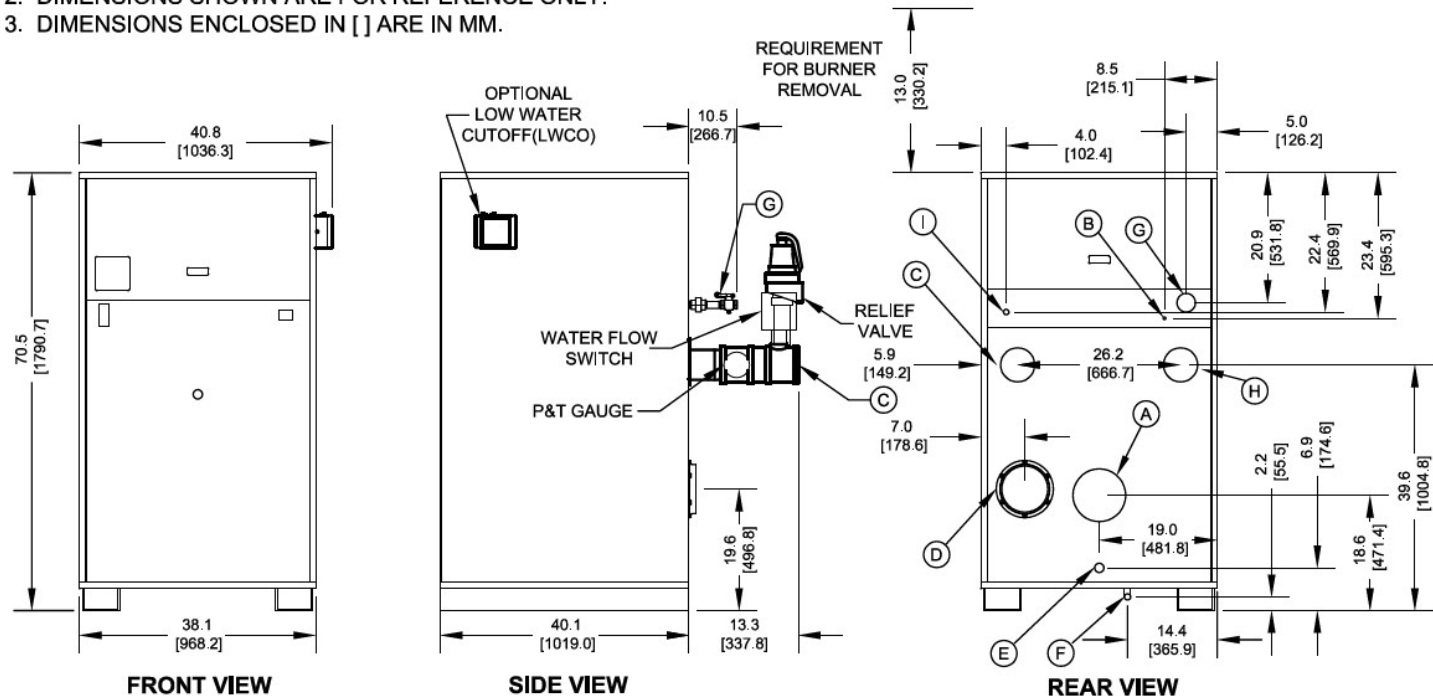


NOTES:

1. SEE O&M FOR REQUIRED INSTALLATION CLEARANCES.
2. DIMENSIONS SHOWN ARE FOR REFERENCE ONLY.
3. DIMENSIONS ENCLOSED IN [] ARE IN MM.



KEY	DESCRIPTION	
A	Flue Outlet	6" [152.4] Diameter (AL29-4C SS)
B	Factory Installed Pilot Gas Li	1/4" [6/4] O.D. Tube
C	Water Supply to System	4" NPT
D	Inlet Air	8" [203.2] Diameter
E	Drain, Startup Condensate	5/8" [15.9] O.D. Tube SS
F	Appliance Drain	1" NPT
G	Gas Supply	1 1/2" NPT
H	Water Return from System	4" NPT
I	Optional Gas Train Vent	3/4" NPT (D.B.&B & D.B.&B w/ POC Only)

NOTES:

1. SEE O&M FOR REQUIRED INSTALLATION CLEARANCES.
2. DIMENSIONS SHOWN ARE FOR REFERENCE ONLY.
3. DIMENSIONS ENCLOSED IN [] ARE IN MM.

Submittal Data Sheet

RATINGS AND CAPACITIES

Input (MBH):	2,000,000	BTU/HR
Output (MBH):	1,732,000	BTU/HR
Boiler Horsepower:	51.7	BTU/HR
Thermal Efficiency:	86.6%	BHP
Heating Surface:	411	Sq.Ft.
Water Content:	40.1	Gallons
Fuel:	Natural Gas or LP Gas	
Firing Rate:	Reliable Modulation	
Burner Turndown:	3:1	
Low NOx Emissions:	<10 ppm	
Inlet Gas Pressure (NG):	See Chart at right	
Inlet Gas Pressure (LP):	See Chart at right	

* This data supercedes data found on Table 3 of I&O Manual, per PRODUCT UPDATE issued June 6, 2024.

Shipping Weight, Approximate: **1,835** lbs

ASME Section IV (Max 160 PSIG / 250°F)

Setpoint range is 145-230°F

Adjustable, manual reset high limit setting of ≤ 240°F.

ASME H stamp MAWT is 250°F for the vessel. (For max setpoint, see Setpoint range.)

UL Certified to ANSI Z21.13 / CSA 4.9

UL Certified to UL 795 / CSA 3.1



FLows AND PRESSURE DROPS

Delta T	Flow (GPM)	ΔP (Ft. Hd)
20°F ΔT	173 (Max)	4.27
40°F ΔT	87 (Min)	1.36

Electrical Supply Options

<input type="checkbox"/>	120v/60hz/1ph (Standard)	7.5 amps
<input type="checkbox"/>	208v/60hz/1ph	6.6 amps
<input type="checkbox"/>	230v/60hz/1ph	6.4 amps
<input type="checkbox"/>	208v/60hz/3ph	6.0 amps
<input type="checkbox"/>	230v/60hz/3ph	6.0 amps
<input type="checkbox"/>	460v/60hz/3ph	3.0 amps

Blower Motor (hp)

1-1/2

Relief Valve Options

<input type="checkbox"/>	30 psi	<input type="checkbox"/>	50 psi	<input type="checkbox"/>	60 psi
<input type="checkbox"/>	75 psk	<input type="checkbox"/>	100 psi	<input type="checkbox"/>	125 psi
<input type="checkbox"/>	150 psi				

DIMENSIONS / CONNECTIONS

Height:	70 1/2"	(Note 1)
Width:	38 1/8"	(Note 2)
Length:	40 1/8"	(Note 3)
Supply Connection:	4"	
Return Connection:	4"	
Vent / Air Intake Connections:	6" Vent	8" Intake
Condensate / Appliance Drain Connection:	5/8" Condensate Tube	1" NPT Drain
Gas Connection:	1 1/2"	

NOTES:

1. Height dimension is from floor to top of jacket.

2. Length is from jacket front to jacket rear.

3. Dimensions shown are for reference only

Inlet Gas Pressure

SIZE	Nat. Gas Min. ("w.c.)	LP Min. ("w.c.)	Max
500	5.0" w.c.	8.0" w.c.	14.0" w.c.
750	7.0" w.c.*		
1000	7.0" w.c.*		
1500	7.0" w.c.*		
2000	9.0" w.c.*	9.0" w.c.	
2000s	7.0" w.c.	8.0	
2500	6.0" w.c.		
3000	6.0" w.c.		

* NOTE: Optional natural gas train with 4" w.c. minimum inlet gas pressure
ONLY AVAILABLE on sizes 750, 1000, 1500 & 2000.

Submittal Data Sheet

STANDARD EQUIPMENT

PRESSURE VESSEL DESIGN

Copper Fin-tube construction
Carbon steel or cast iron header design
Gasketless heat exchanger
ASME Section IV certified "H" stamp
MAWP 160 PSI & max design temp 250°F
5-year heat exchanger warranty
20-year thermal shock warranty

COMBUSTION DESIGN

Maintenance-free ceramic burner
Ultr-low NOx emissions (<10ppm)
Whisper quiet operation (<50 dBA)
Easy to service, 99% efficient industrial air filter
Industrial cast aluminum blower assembly
VFD Driven Blower
Reliable electric spark-to-pilot ignition
10-year burner warranty
Honeywell UV-Scanner

VENTING

Sealed or room air combustion
Direct vent (sidewall or vertical) (Cat IV)
Conventional venting (Cat II)
NOTE: This is NOT a Cat 1 Vent appliance.

BOILER EQUIPMENT

Siemens RWF55 operating control
High limit w/ manual reset safety temperature control
Water flow switch
Low water cut-off with manual reset safety controller
Outlet temperature sensor
Combustion air switch
Pressure and temperature gauge
Safety relief valve (Optional pressure 30 - 150 PSI; See details above.)

Single point electrical supply: (Available in: 1 and 3 phase options. See details above.)

BURNER EQUIPMENT

UL/FM/CSD-1 gas train
Reliable Turndown
Natural or LP gas
Pilot gas valve / Pilot gas regulator
Siemens SKP-75 gas valve
Low and high gas pressure switches with manual reset

SIEMENS RWF55 OPERATING CONTROL FEATURES

Adjustable set point
Remote set point (0-10v or 4-20 mA)
Outdoor air temperature reset

OPTIONAL EQUIPMENT

Low gas pressure venturi, 4" wc (AVAILABLE ONLY on Models 750-2000) [FACTORY INSTALLED OPTION ONLY]

- ☐ Line Reactor Adds voltage / spike protection for the blower's VFD. (*Highly recommended for areas with dirty voltage.*)
- ☐ Honeywell 7800 Series display with ModBus Module
Line Reactor Adds voltage / spike protection for the blower's VFD. (*Highly recommended for areas with dirty voltage.*)
- ☐ Outdoor Air Sensor
- ☐ Condensate neutralizer:
- ☐ 850 MBH ☐ 1,200 MBH
- ☐ 2,000 MBH ☐ 5,000 MBH
- ☐ Pump Kit (Boiler Circulation Pump, Pump Flange Kit Sized based on a 20°F Delta T)
- ☐ Annual Maintenance Kit
- ☐ System Temperature Sensor
- ☐ ModBus RS485 communication for Siemens RWF55 and Honeywell Flame Safeguard Control (Boiler to BMS System)
- ☐ Universal comms. gateway (BACnet MS/TP, BACnet/IP, N2, Modbus TCP)
- ☐ Local / remote switch
- ☐ Alarm bell with silencing switch
- ☐ Relays: ☐ General Alarm ☐ Boiler Status
- ☐ Conductor Sequencing Panel: Req. for multiple EVA applications without BMS. Contact your RSM with Questions.)

The Conductor Sequencing Panel manages multiple condensing & non-condensing, small & large heat output, new and/or existing boilers (full modulation), and steam or hot water applications. It helps improve system efficiency by selecting and modulating the right boiler to match operating conditions. The Conductor offers a single point boiler plant Energy Management System (EMS) interface including Modbus TCP/IP, Modbus RTU RS485, BACnet/IP and BACnet MSTP standard. If Lonworks needed, add for the separate Lonworks gateway.

Extended Warranty Options Available:

	<u>3-Year</u>	<u>5-Year</u>	<u>10 Year</u>
<u>Parts Only</u>	<input type="checkbox"/>	<input type="checkbox"/>	<input type="checkbox"/>
<u>Parts and Labor</u>	N/A	<input type="checkbox"/>	<input type="checkbox"/>